

CA HMO Rate 2001

From MCOL

TUTORIAL

Browse through these
tutorial slides to
quickly see how to use
CA HMO Rate 2001...

CA HMO Rate 2001

From MCOL

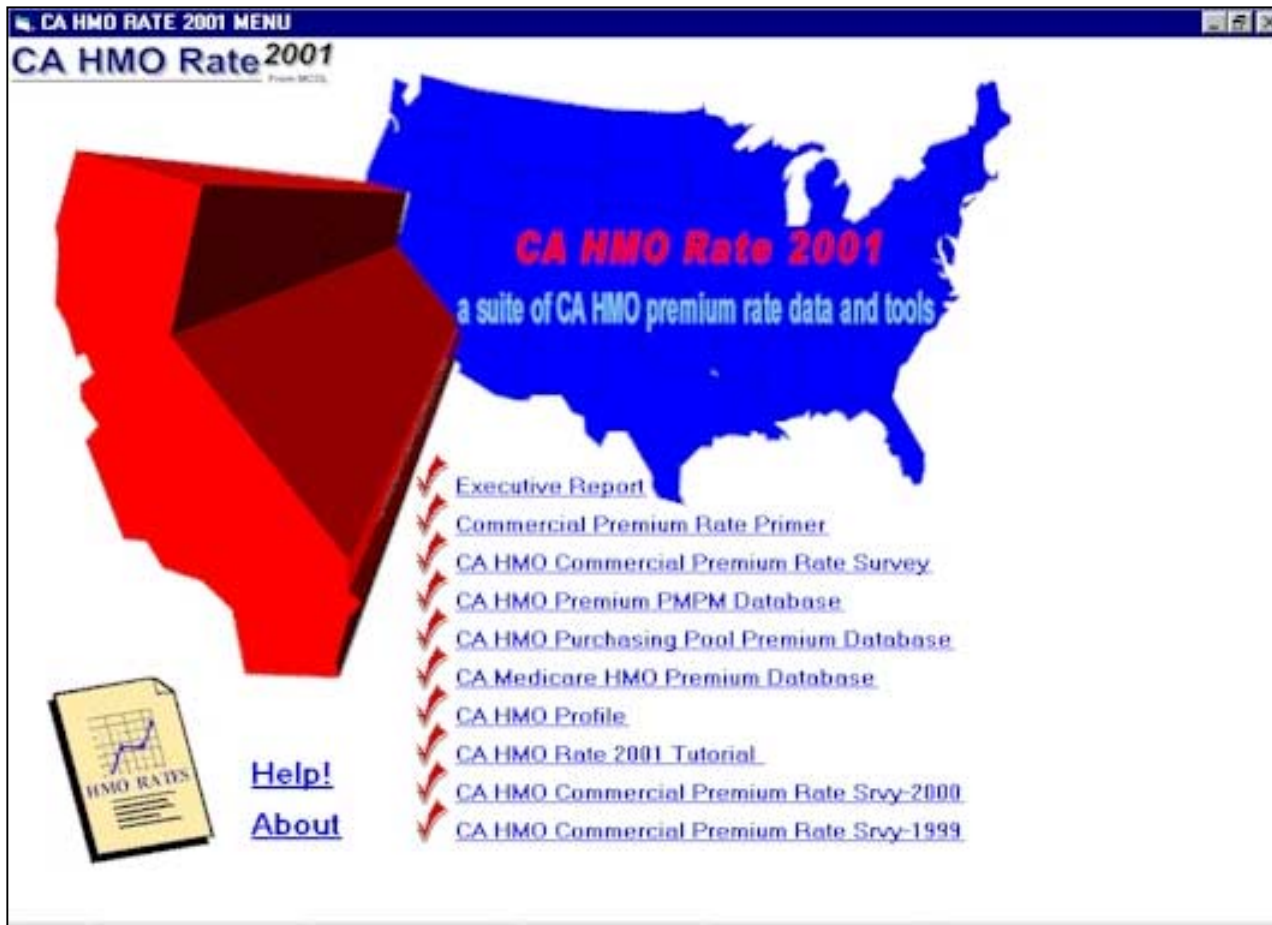
Opening Menu



Use the opening menu to select your desired modules....

CA HMO Rate²⁰⁰¹ TUTORIAL

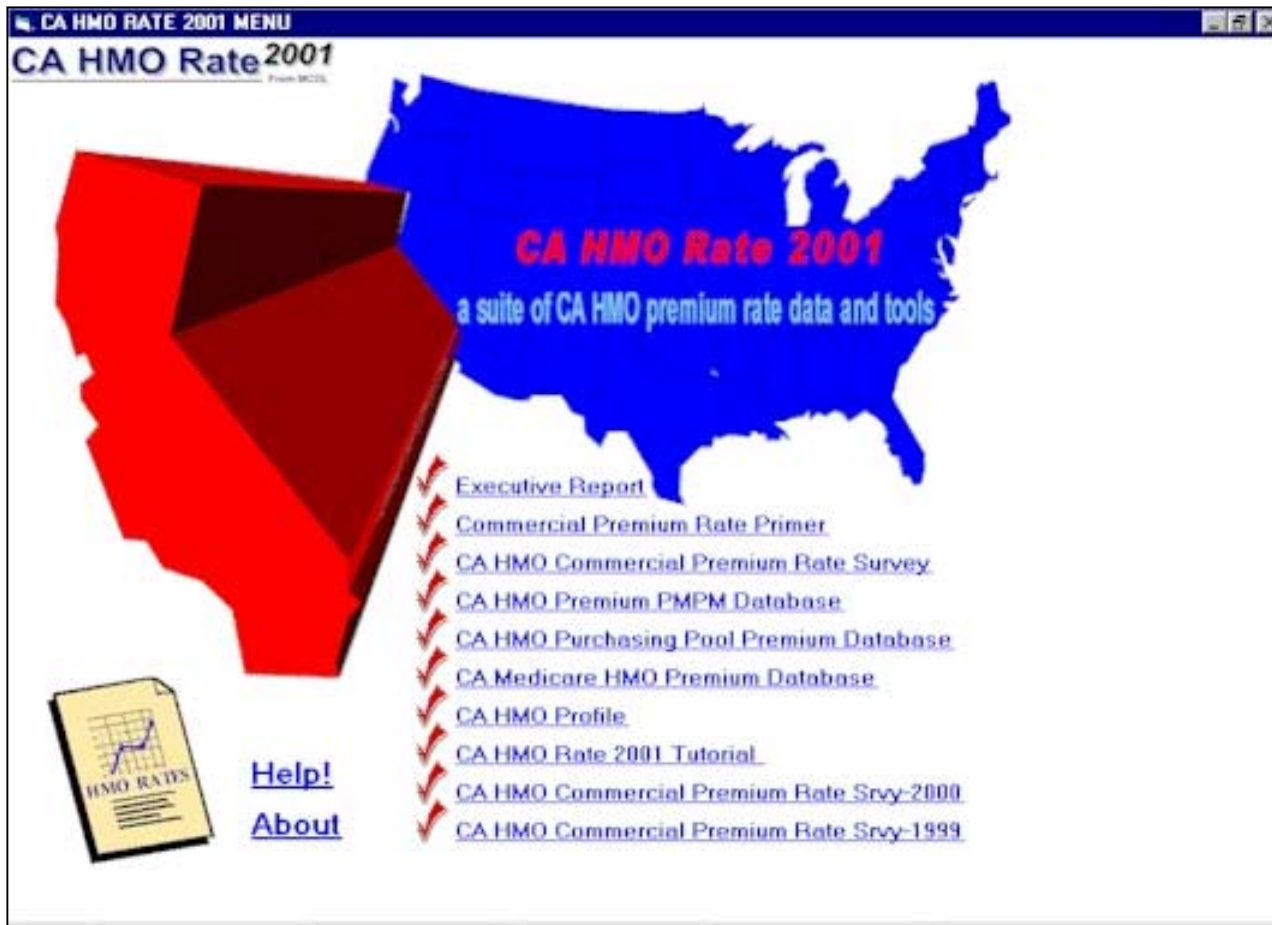
From MCOL



From the opening menu, you can click to select any desired module from the CA HMO Rate 2001 Data Suite.

CA HMO Rate ²⁰⁰¹ TUTORIAL

From MCOL



The modules include....

- **Executive Report Module**

The Executive Report provides a narrative of key findings from each of the modules along with summary data tables for each module, including a series of tables addressing various categories from the CA HMO Rate 2001 Commercial Premium Rate Survey. The report encompasses 150+ pages and is presented in adobe acrobat format.

- **Commercial Premium Rate Primer Module**

The Primer is a series of premium rate management articles addressing key premium rate trends and methodologies issues in an easy to read and understand style, and presented in adobe acrobat format.

- **CA HMO Commercial Premium Rate Survey Module :**

Avg. premium rates by tier, benefit level and group size for most CA counties by plan, based on current agent and employer survey information that yielded 18,009 sets of premium rates in the Rate 2001 survey, provided in Microsoft Access format with a MCOL software application to produce reports, queries and file extraction. Pre-set reports are also provided in Microsoft Excel format for key categories and with premium increase analysis so you won't need to prepare reports for a number of the most popular items.

- **CA HMO Premium PMPM Database Module:**

Avg. Premium PMPM revenue and membership by product for recent years for most CA plans, provided in a Microsoft Excel worksheet.

- **CA Medicare HMO Premium Database Module:**

Current Medicare HMO Premium and benefit information by plan by county, plus current and past Medicare+Choice payment rate tables by county, provided in a Microsoft Excel workbook.

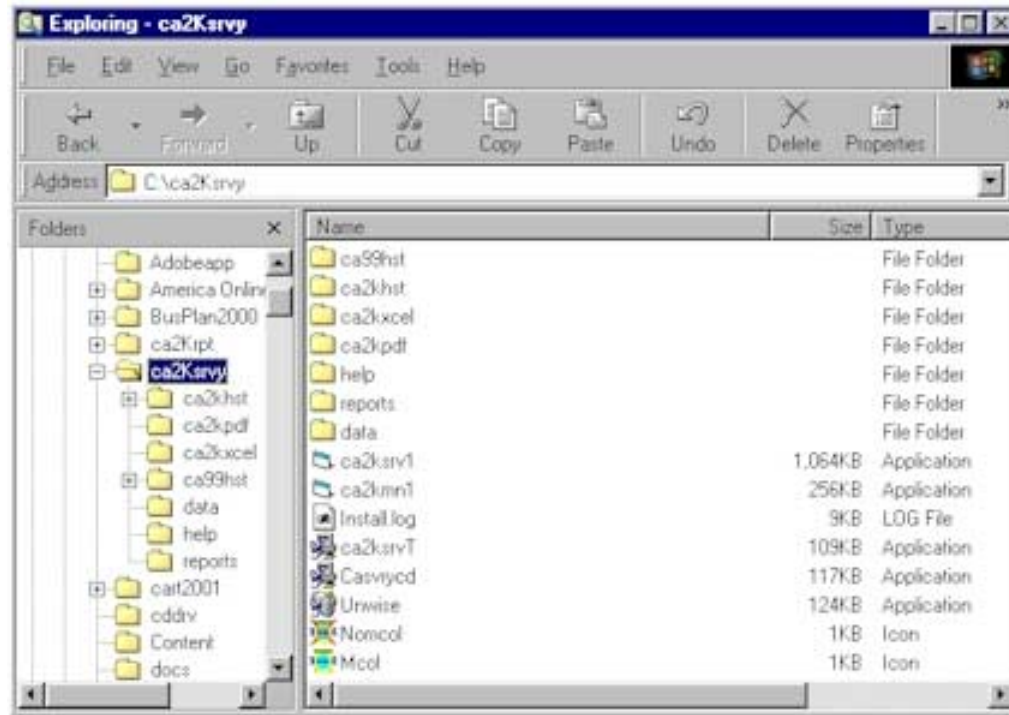
- **CA HMO Profile Module:**

Directory of California HMOs with contact information, web addresses, membership information, Plan CEO, service areas by county and more. Provided in Adobe Acrobat format.

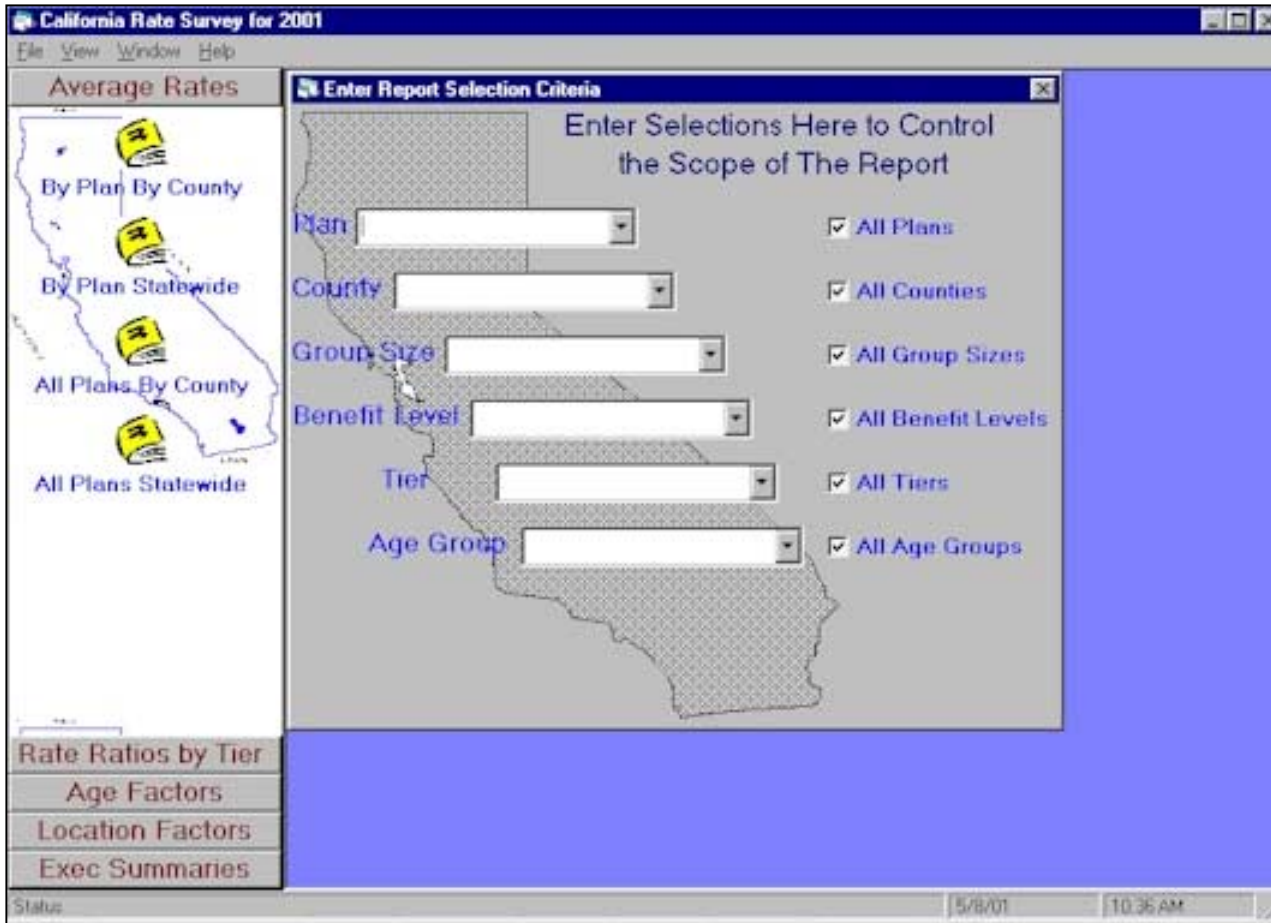
- **CA HMO Commercial Rate Survey 2000 Module:**
The historical commercial premium rate survey database for 2000. The database is provided with the same front end MCOL software application as the 2001 Commercial survey, and is provided in Microsoft Access format.

- **CA HMO Commercial Rate Survey 1999 Module:**

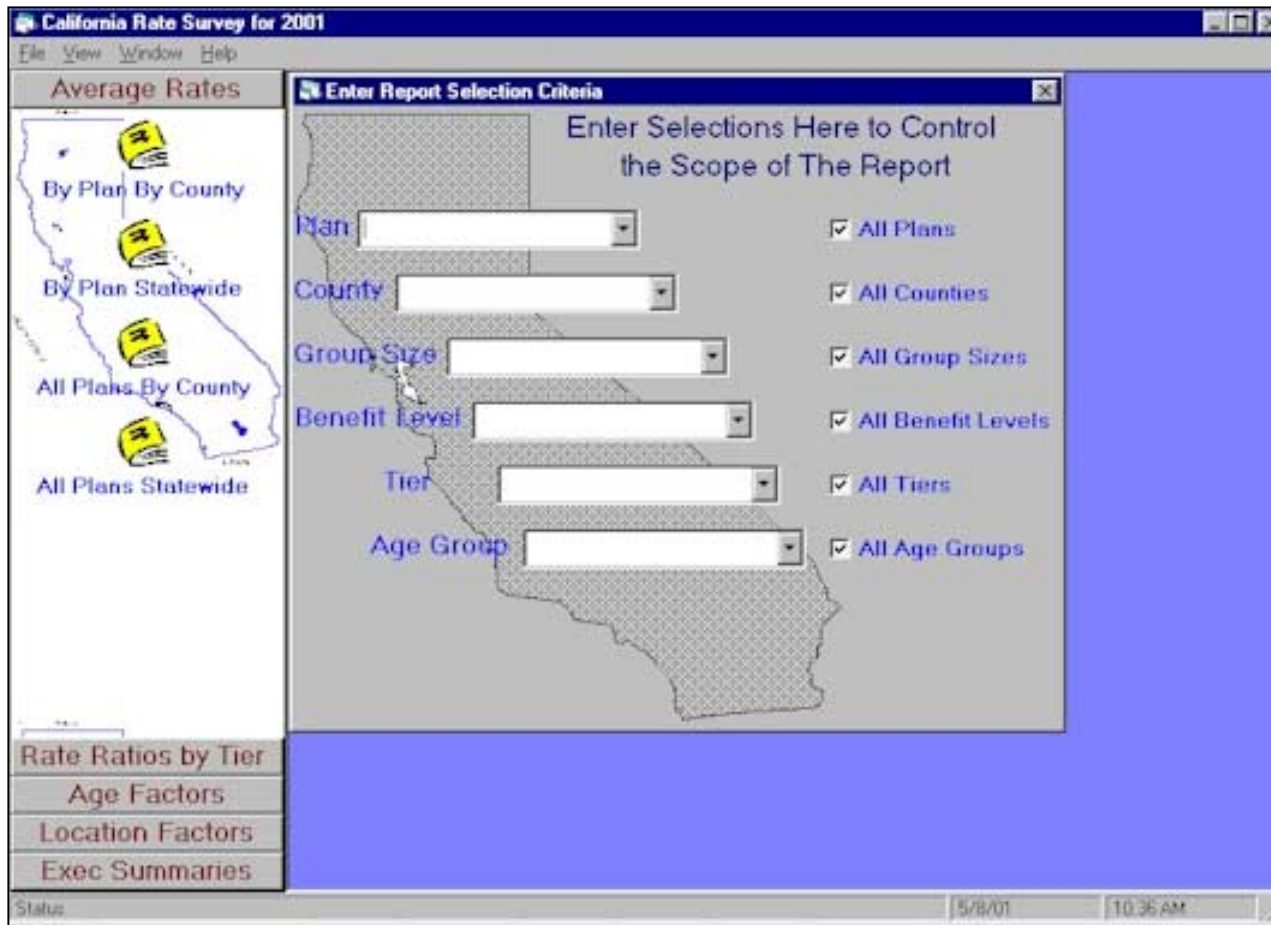
The historical commercial premium rate survey database for 1999. The database is provided in Microsoft Access format.



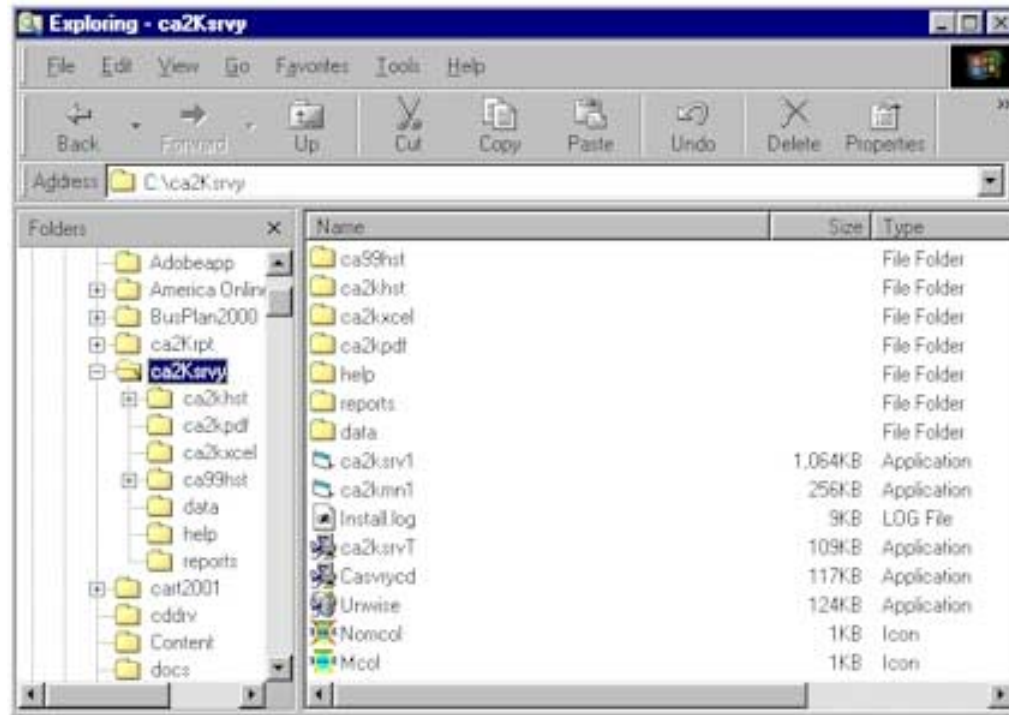
If you prefer not to use the opening menu, and just want to get the data files provided, you can use Windows Explorer to select your files...



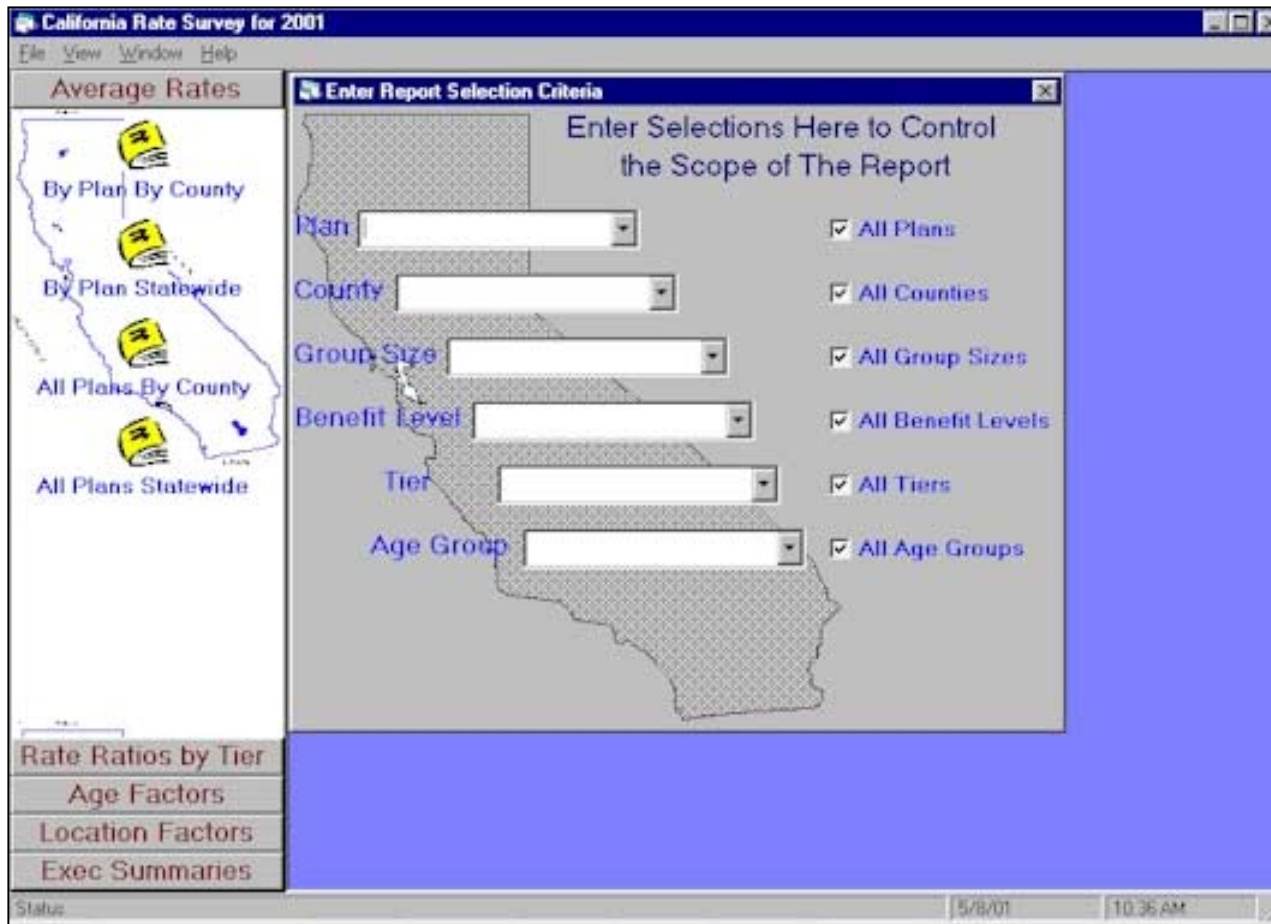
The centerpiece of the CA HMO Rate 2001 Data Suite is the Commercial Rate Survey Database.



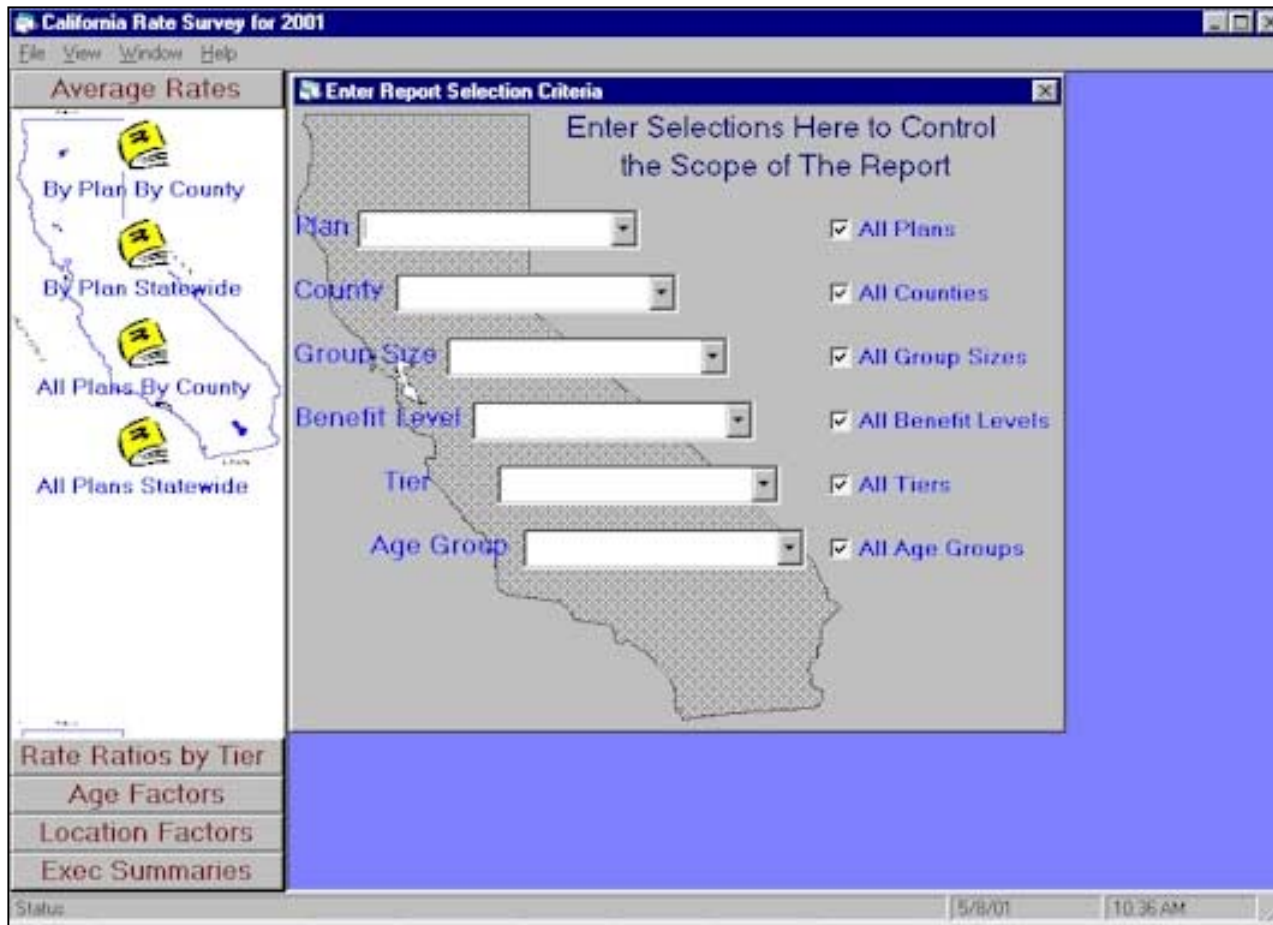
You can use the opening screen in the CA HMO Commercial Premium Rate Survey to select the data elements you want to query or open pre-set reports.



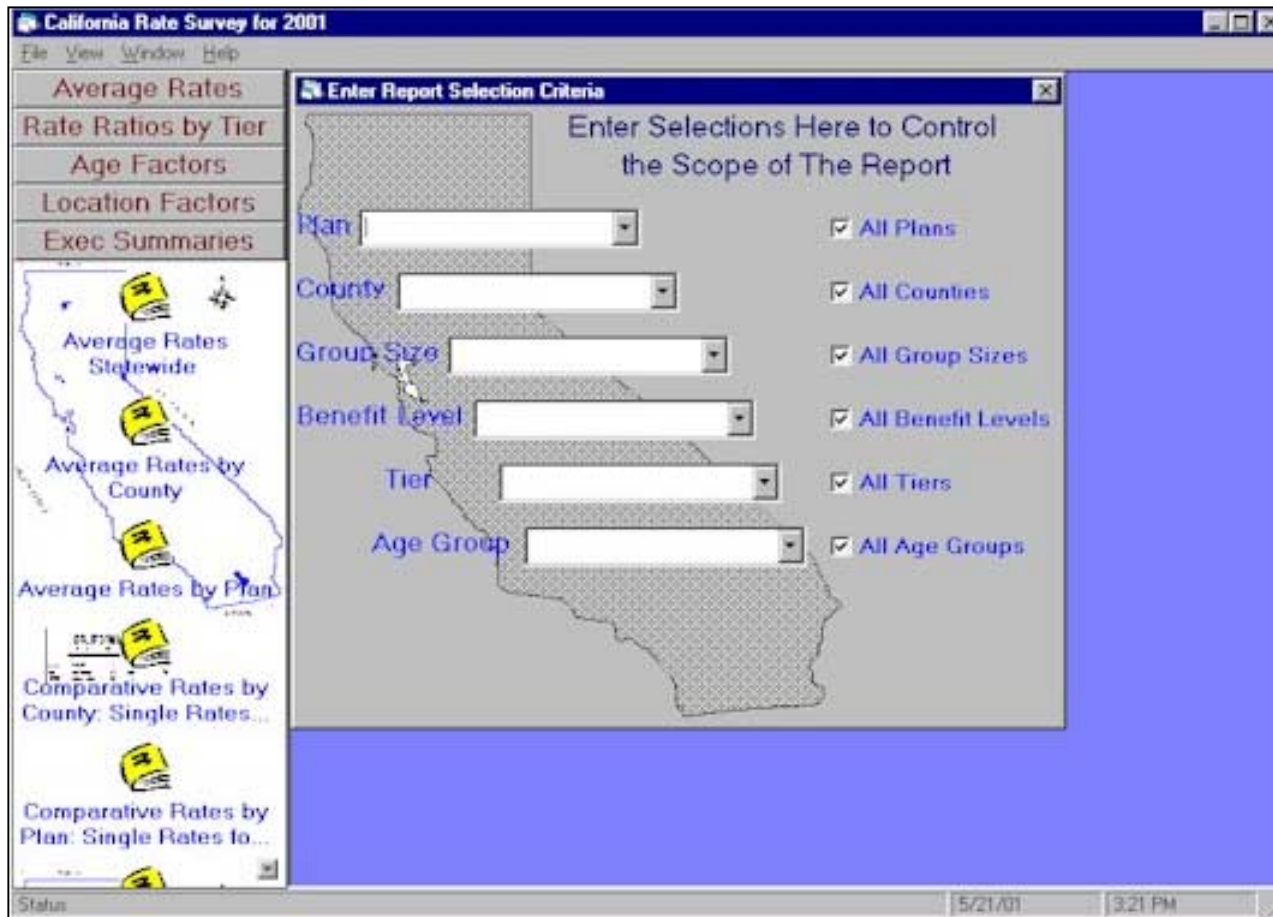
If you prefer not to use this front-end software application to query the database, and just want to directly work with the file in Access, you can use Windows Explorer to open the file from the path ca2ksrvy/data



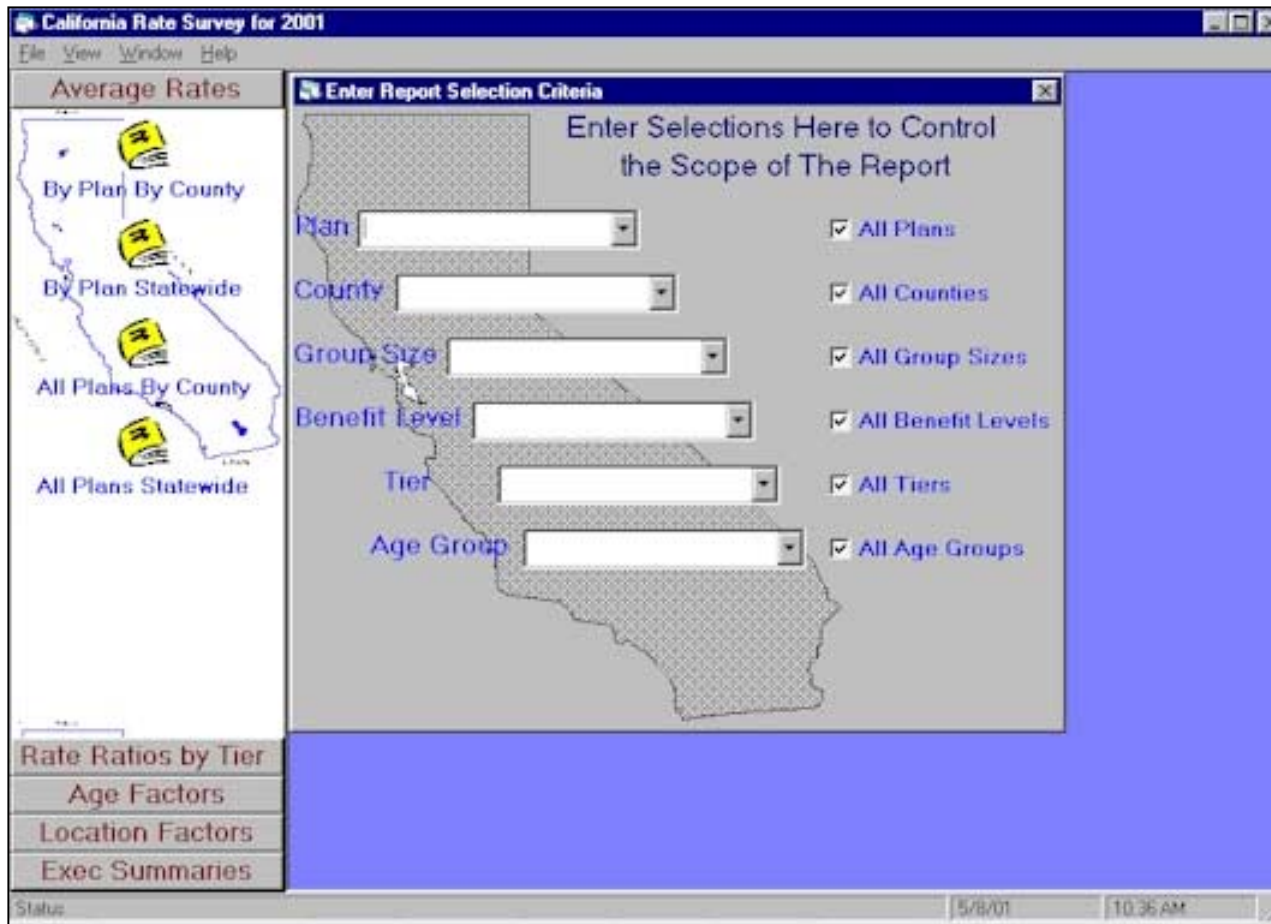
To use this front-end application, you select your desired function from the gray boxes in the left frame menu...



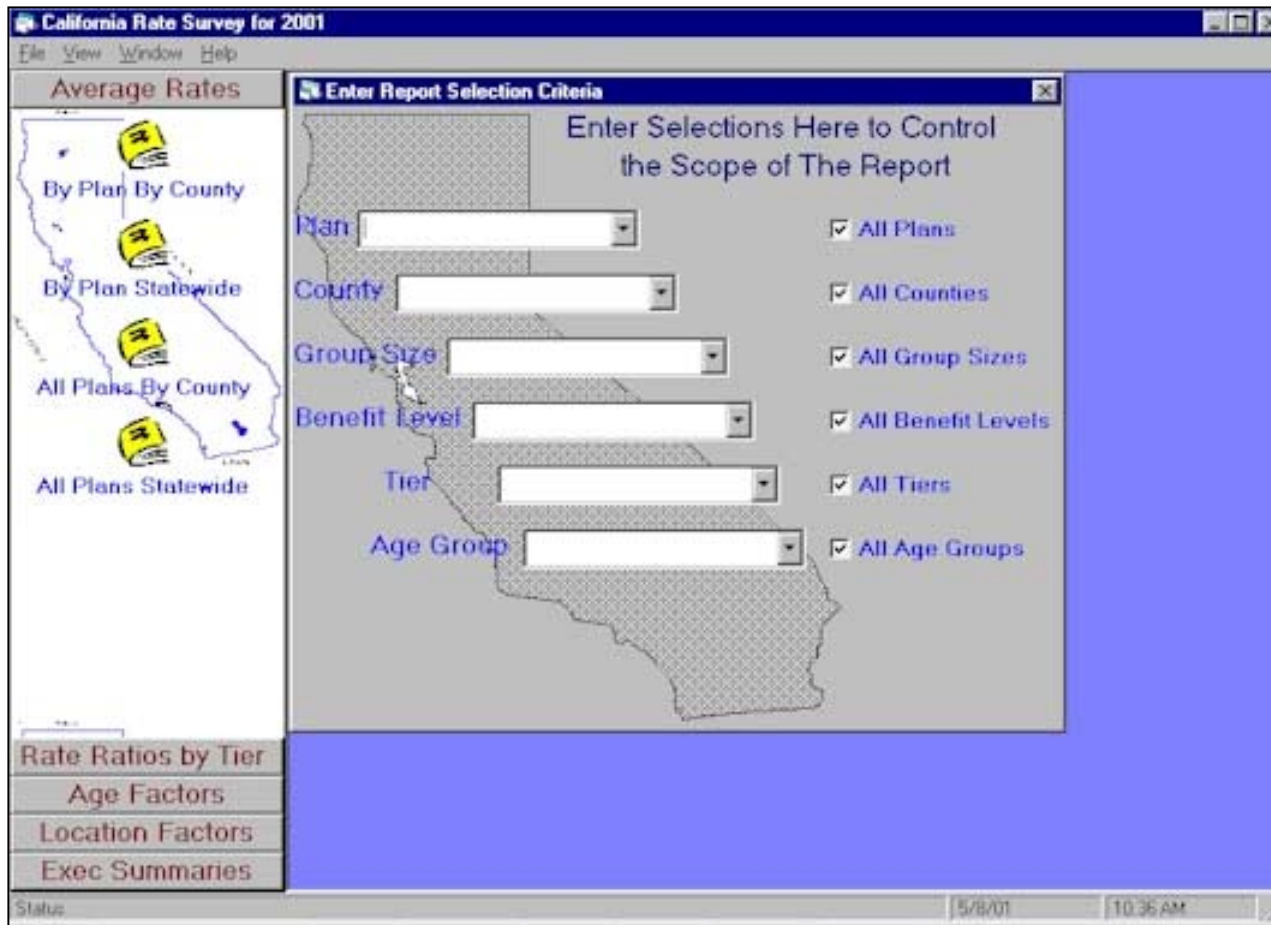
The easiest way to instantly analyze some data is to select the Exec Summaries button at the bottom of the left frame menu...



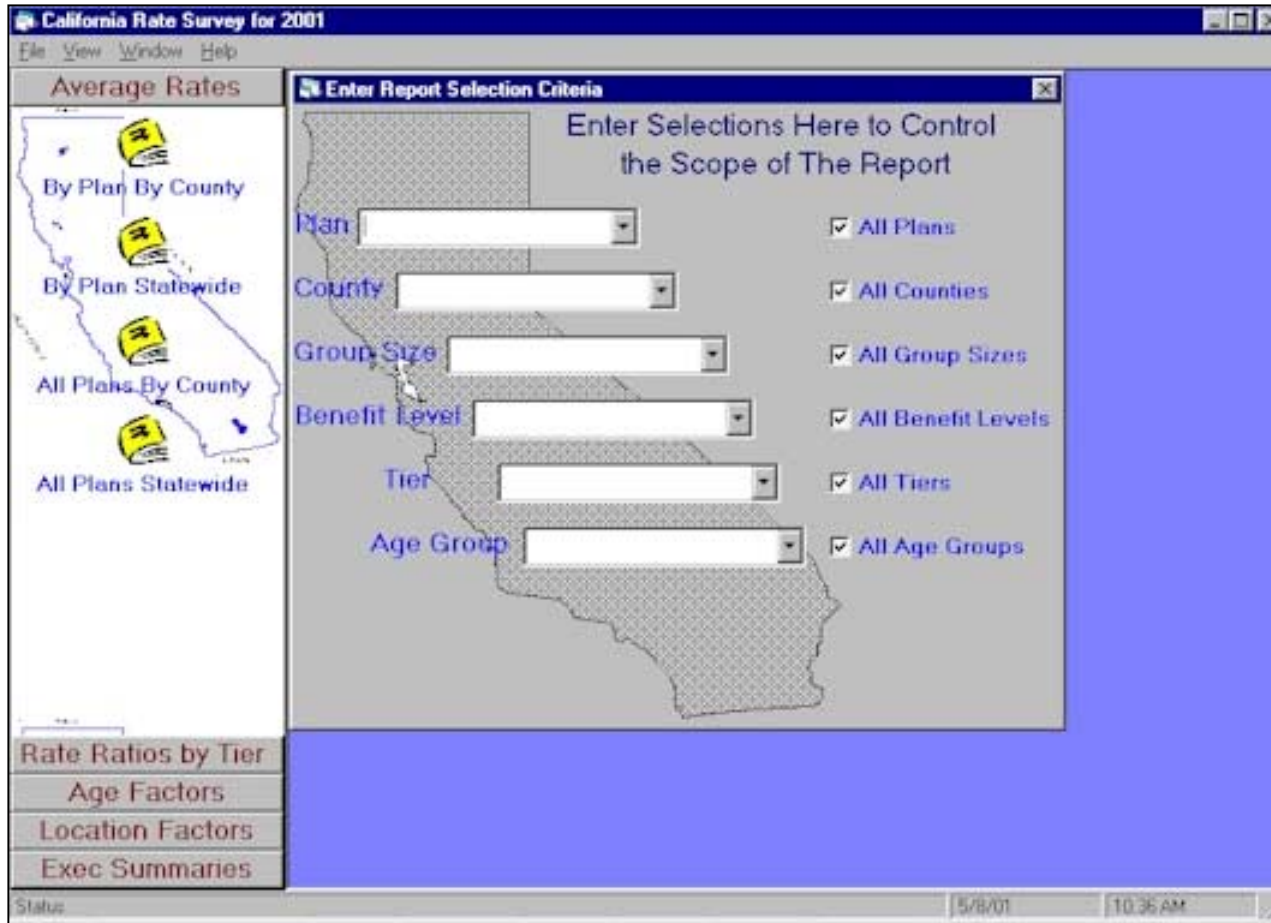
You can then select from a menu of pre-set Excel spreadsheet reports by clicking an applicable yellow book icon in the left frame menu.



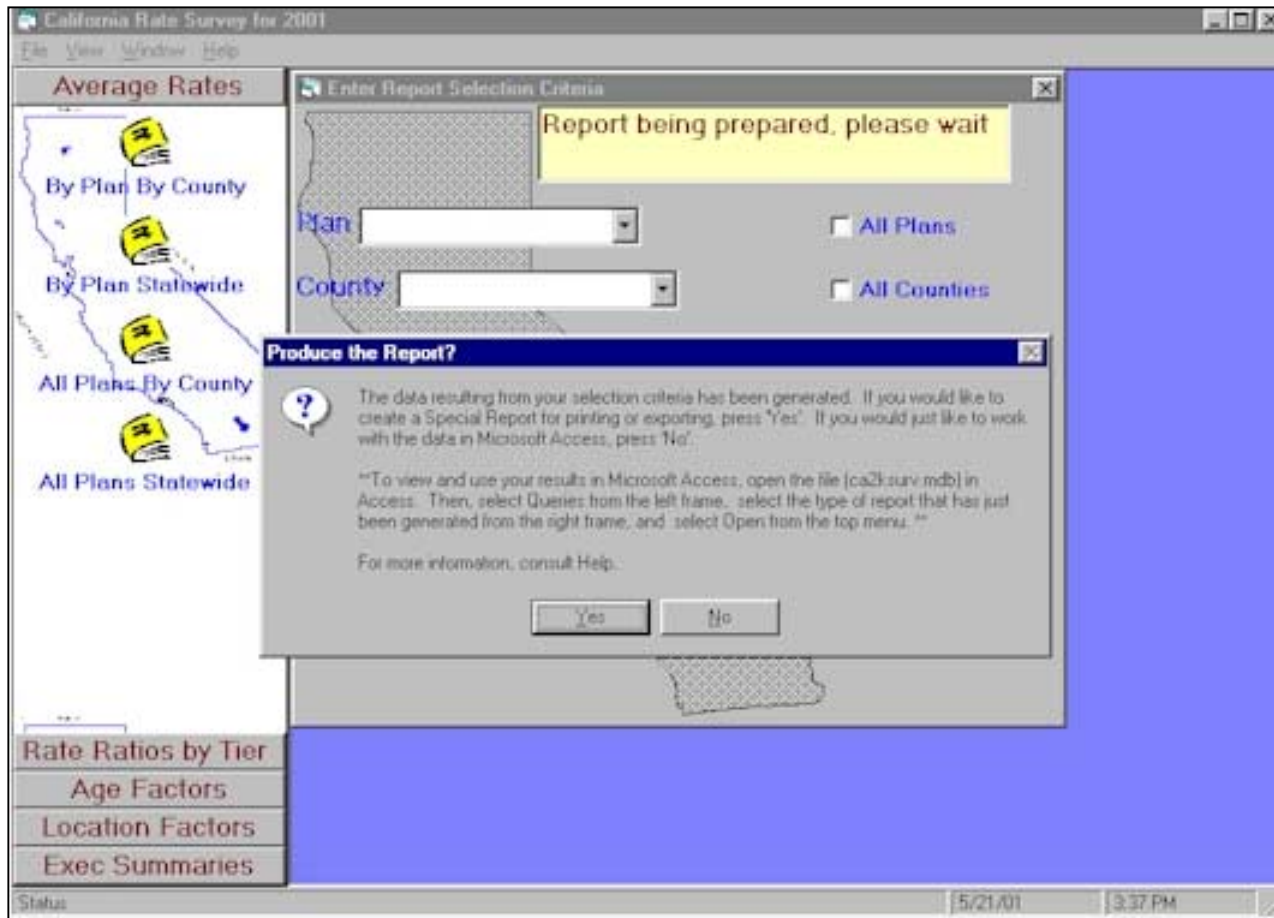
To query the database, first select the type of report you desire from the gray boxes in the left frame menu (Average Rates, Rate Ratios, Age Factors or Location Factors)...



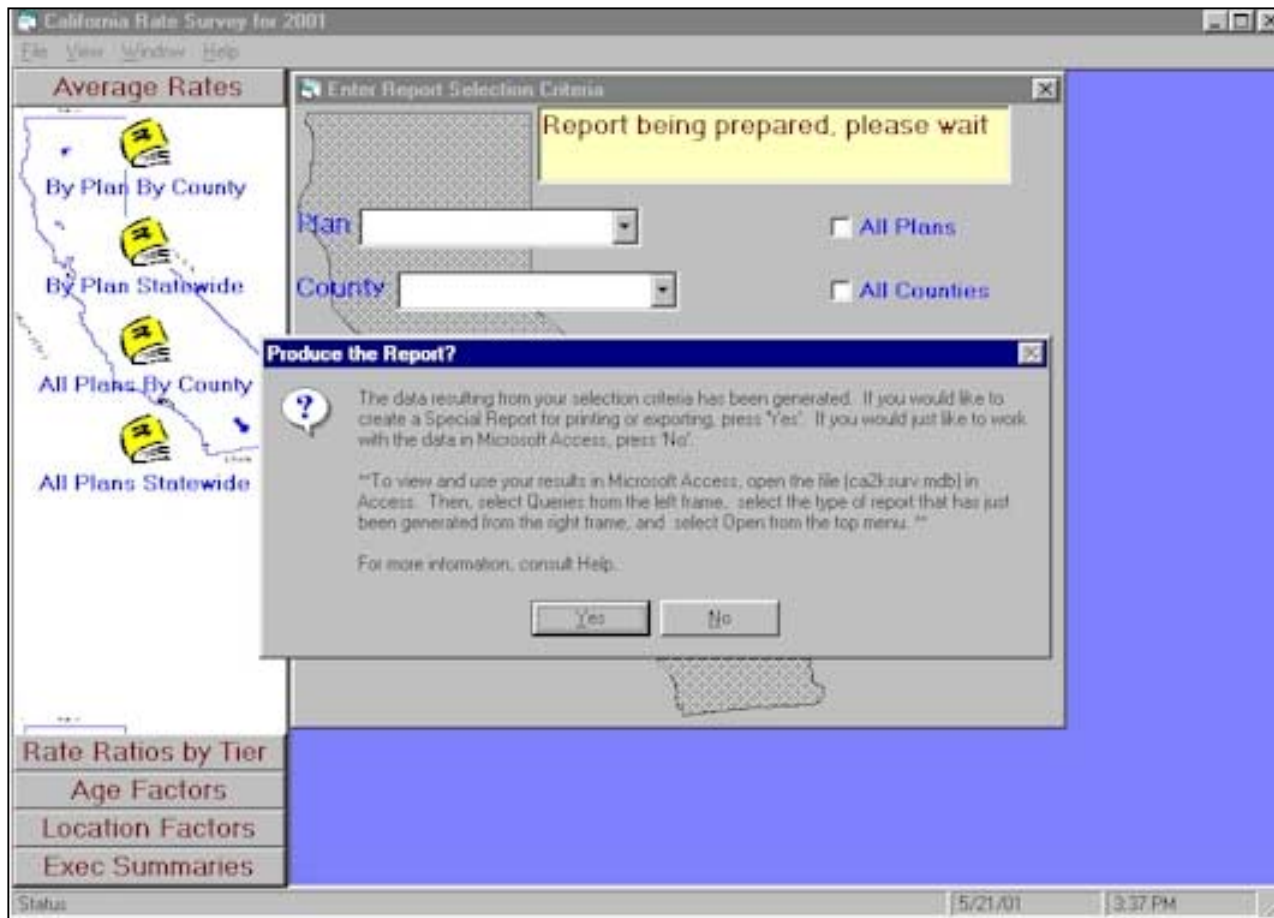
You then make your database query selections in the right-frame menu, either by leaving the boxes checked to select all for a category, or selecting from the drop-down boxes to narrow your selections...



Then you generate the data by selecting your desired report from the choices represented by the yellow book icons.



When the data is compiled, a dialog box will appear asking if you want to produce a special report. If you want to now work with the data in Microsoft Access, click No..

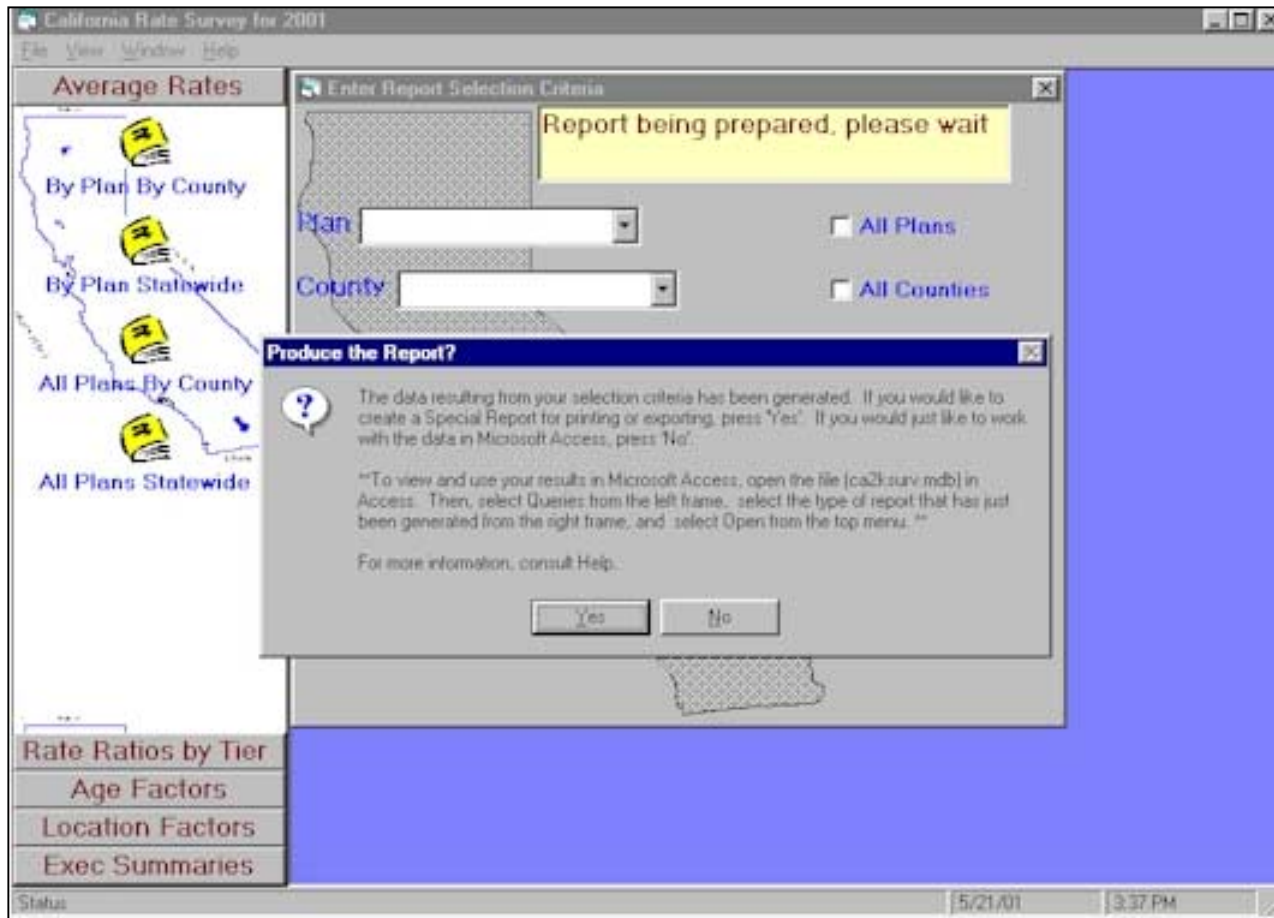


The special report is useful when you have requested a narrow range of data and you don't want to have to work with the information in access. After you click Yes...

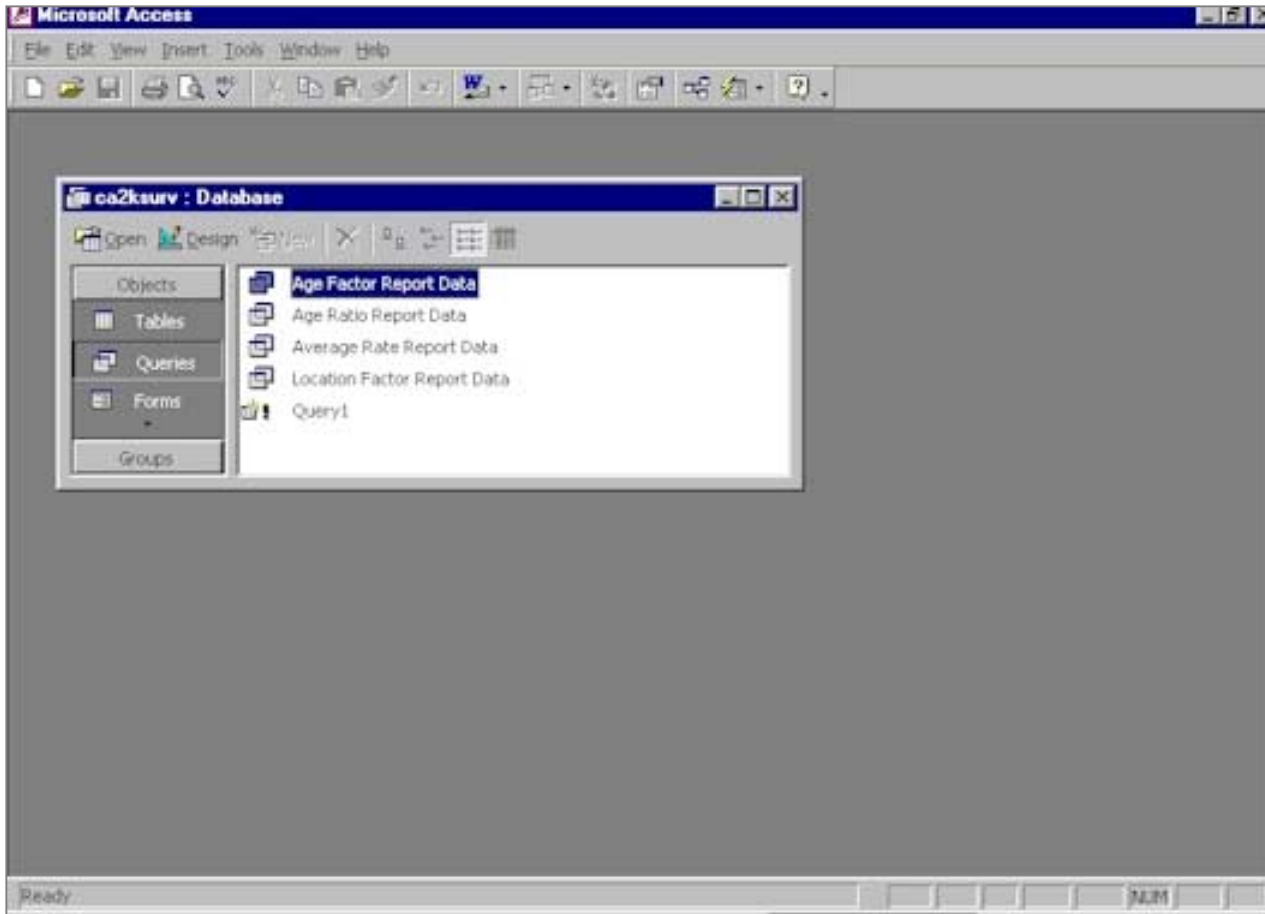
5/21/01 3:43:32PM Premiums by Plan by County California 2001 Page

Plan	County			
Blue Cross	Alameda			
Group Size	Benefit Level	Tier	Age Group	
Individual	High	5	0-29	
Single	Couple	Family	Employee/Childrn	Responses
\$127.00	\$248.00	\$333.00	\$272.00	1
Plan	County			
Blue Cross	Alameda			
Group Size	Benefit Level	Tier	Age Group	
Individual	High	5	30-39	

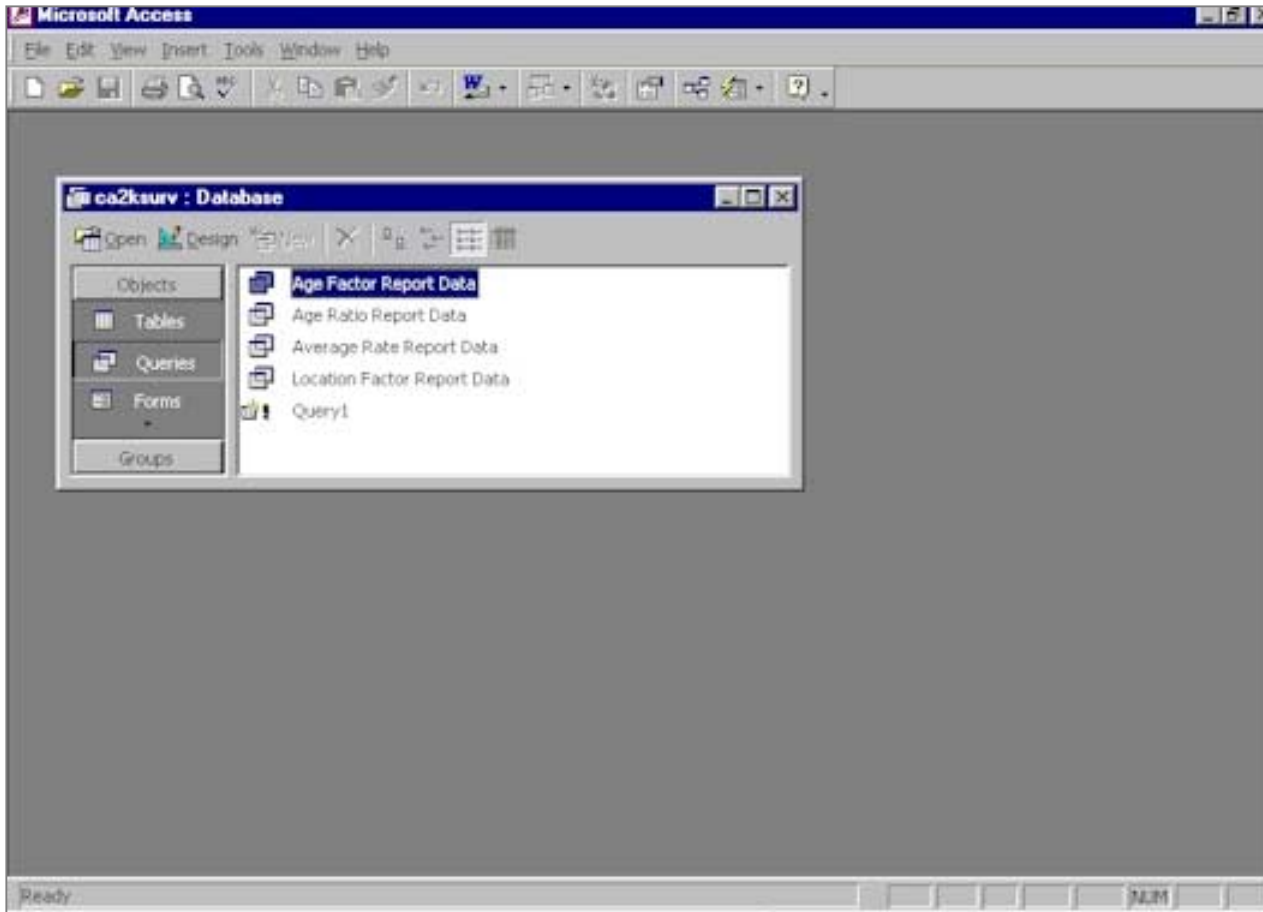
You can print or export data from the special report, using the toolbar buttons provided.



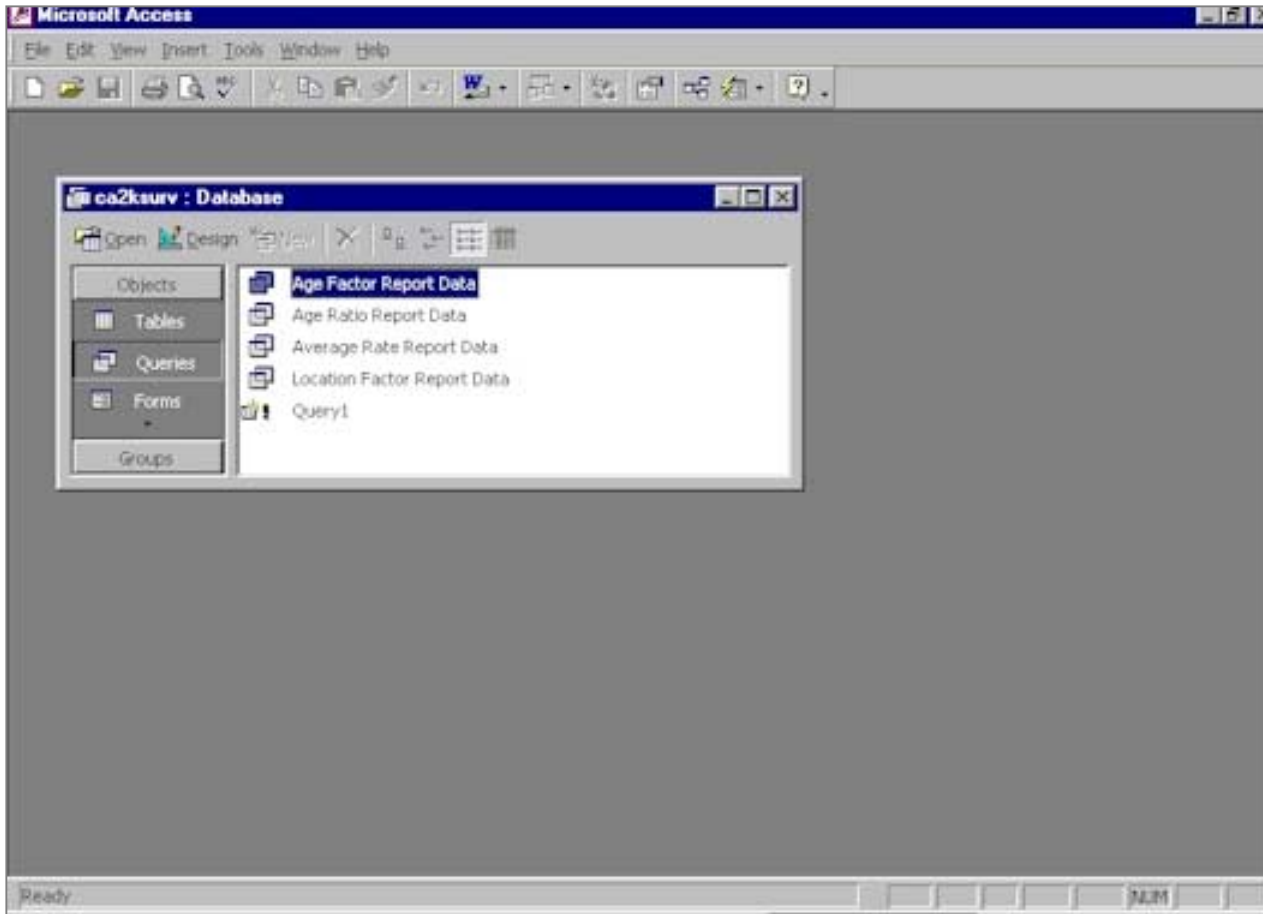
However, the special report isn't practical when you are working with larger quantities of data. Thus you will often want to follow the instructions provided in the dialog box to open the data in Access...



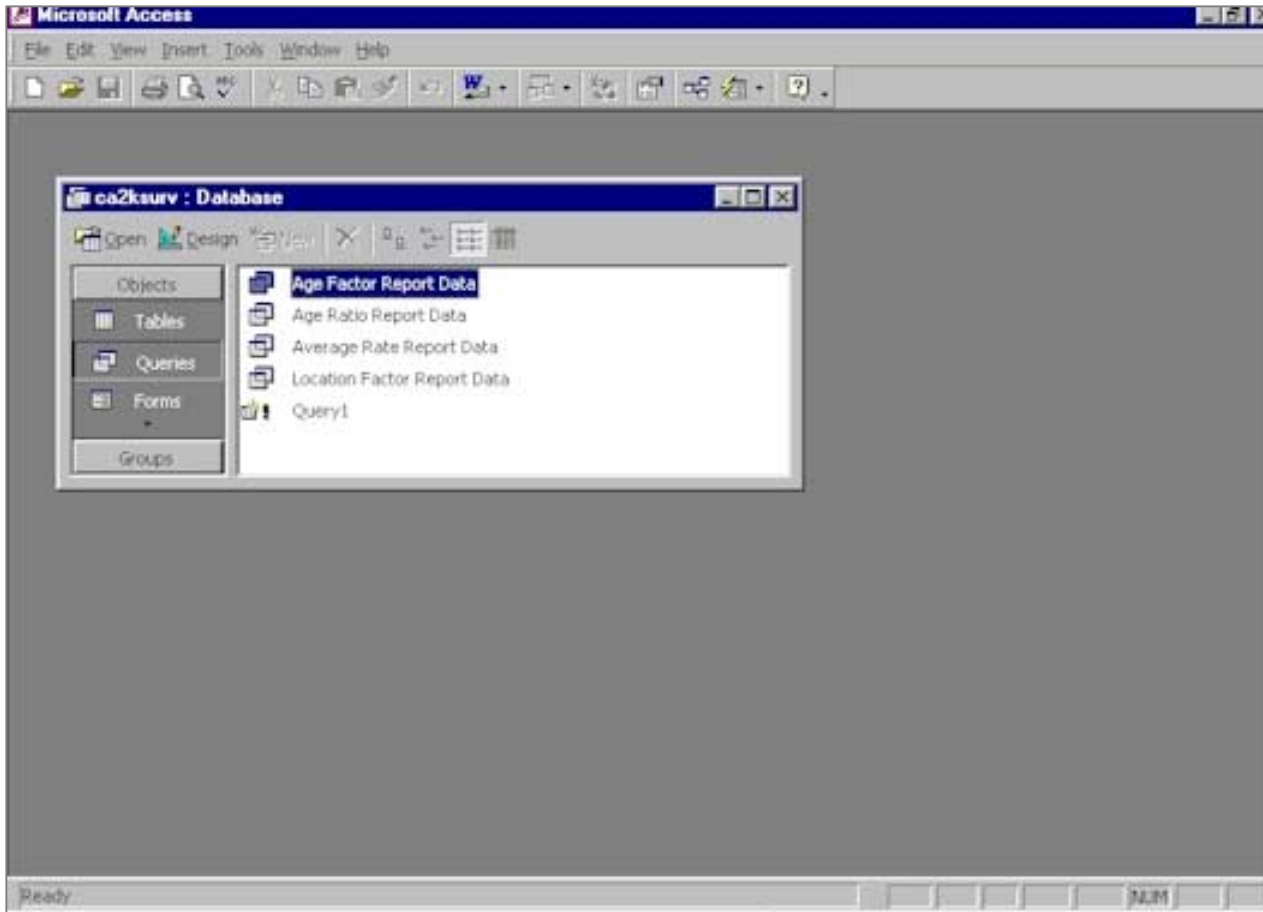
After you click No and open the Access file, you will want to select the applicable report from the Queries right frame menu in Access...



For example, if you selected an Average Rate Report in the front-end applications, then select the Average Rate Report in the Queries right frame menu.



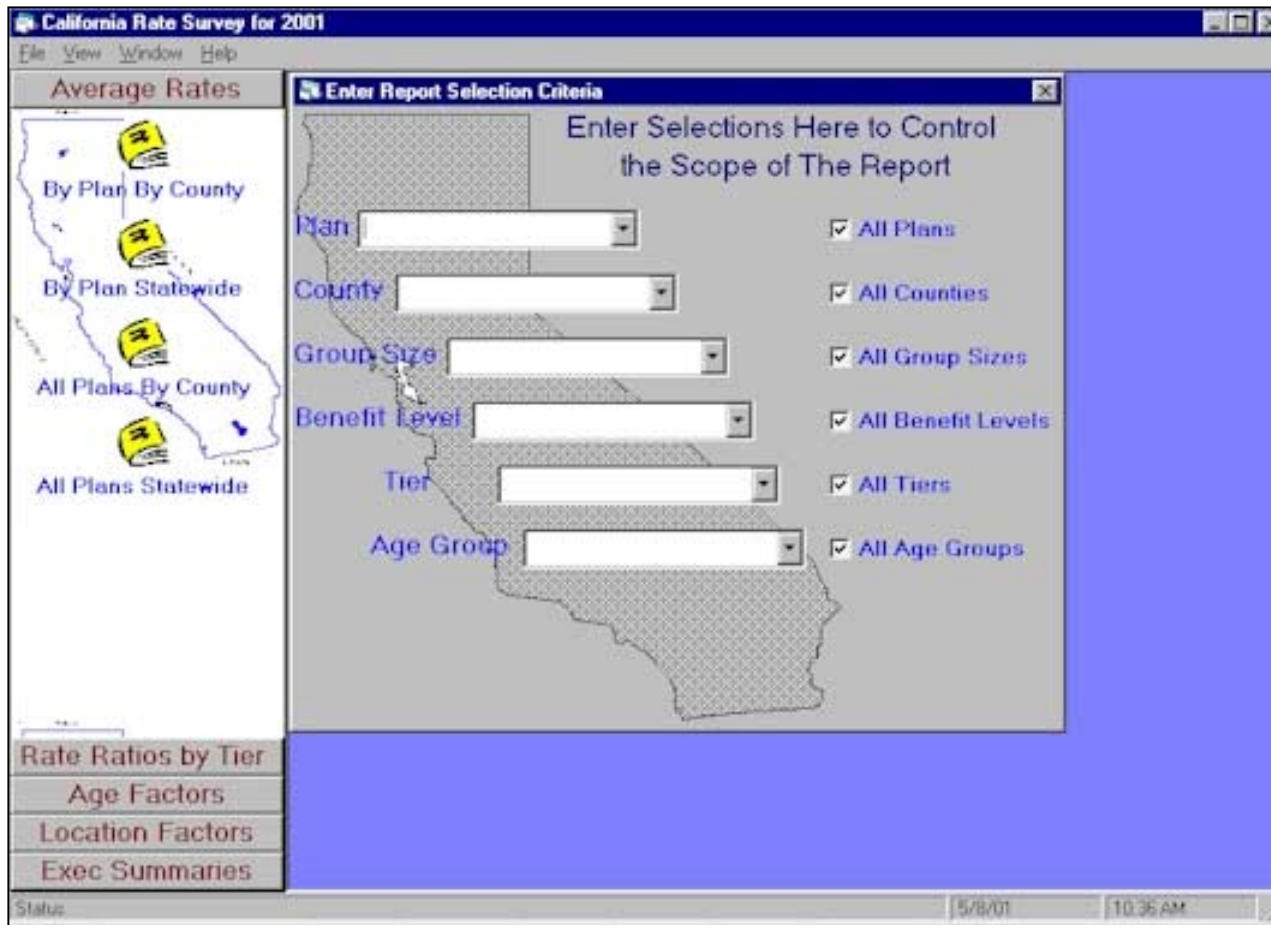
For example, if you selected an Average Rate Report in the front-end applications, then select the Average Rate Report in the Queries right frame menu.



To open the Query, double click your selection or click Open from the Menu...

plan	county	grp_size	ben lev	tiers	age_group	Single_rte	Couple_r
Blue Cross	Alameda	1 B			5 0-29	\$127.00	\$248
Blue Cross	Alameda	1 B			5 30-39	\$153.00	\$298
Blue Cross	Alameda	1 B			5 40-49	\$183.00	\$357
Blue Cross	Alameda	1 B			5 50-54	\$202.00	\$394
Blue Cross	Alameda	1 B			5 55-59	\$221.00	\$431
Blue Cross	Alameda	1 B			5 60-64	\$221.00	\$431
Blue Cross	Alameda	49 B			4 0-29	\$138.00	\$364
Blue Cross	Alameda	49 B			4 30-39	\$173.00	\$433
Blue Cross	Alameda	49 B			4 40-49	\$189.00	\$472
Blue Cross	Alameda	49 B			4 50-54	\$237.00	\$486
Blue Cross	Alameda	49 B			4 55-59	\$290.00	\$665
Blue Cross	Alameda	49 B			4 60-64	\$383.00	\$719
Blue Cross	Alameda	49 B			4 65+	\$542.00	\$1,129
Blue Cross	Alameda	49 D			4 0-29	\$109.00	\$202
Blue Cross	Alameda	49 D			4 30-39	\$135.00	\$336
Blue Cross	Alameda	49 D			4 40-49	\$148.00	\$368
Blue Cross	Alameda	49 D			4 50-54	\$185.00	\$380
Blue Cross	Alameda	49 D			4 55-59	\$226.00	\$517
Blue Cross	Alameda	49 D			4 60-64	\$305.00	\$566
Blue Cross	Alameda	49 D			4 65+	\$412.00	\$855
Blue Cross	Alameda	1000 A			2 All	\$203.84	\$0

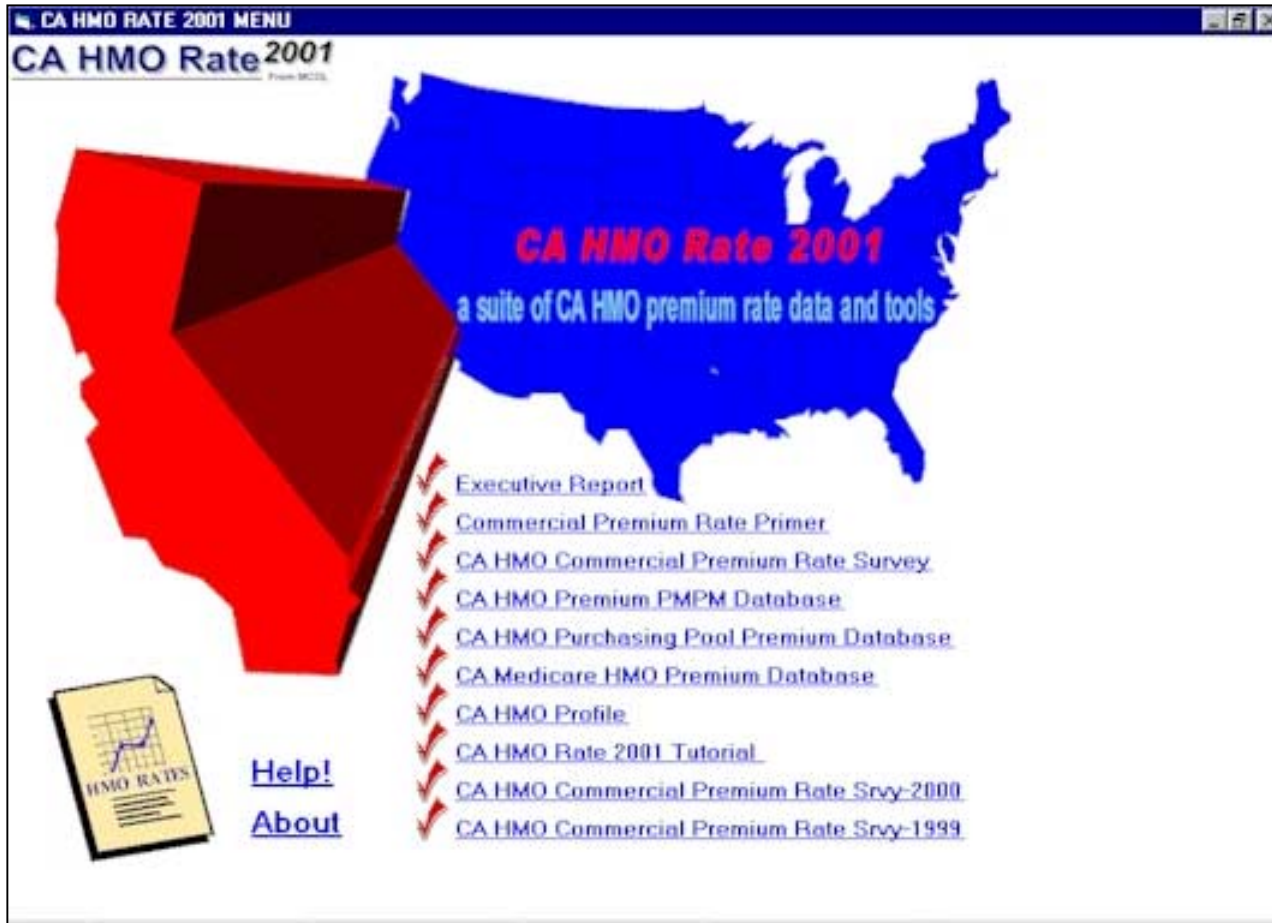
Your query will then open. You can then work with this data in access, export it or copy and paste it in an application like Excel.



You can consult the help file in the Survey application for further assistance by clicking Help from the Top Menu...

CA HMO Rate²⁰⁰¹ TUTORIAL

From MCOL



You can also click Help from the opening menu for further assistance regarding the entire data suite...

CA HMO Rate²⁰⁰¹ TUTORIAL

From MCOL

CA HMO RATE 2001 MENU

CA HMO Rate²⁰⁰¹
From MCOL

CA HMO Rate 2001
a suite of CA HMO premium rate data and tools

- [Executive Report](#)
- [Commercial Premium Rate Primer](#)
- [CA HMO Commercial Premium Rate Survey](#)
- [CA HMO Premium PMPM Database](#)
- [CA HMO Purchasing Pool Premium Database](#)
- [CA Medicare HMO Premium Database](#)
- [CA HMO Profile](#)
- [CA HMO Rate 2001 Tutorial](#)
- [CA HMO Commercial Premium Rate Srvy-2000](#)
- [CA HMO Commercial Premium Rate Srvy-1999](#)

[Help!](#)
[About](#)

HMO RATES

And don't hesitate to call 209.577.4888 for support anytime, or e-mail MCOL at mcare@mccl.com